

APCM Packs and Review of the Year 2021

The St Mary's and ChristChurch Annual Parochial Church Meeting (APCM) will take place this year on **Monday 25 April at 7.30pm** in the Church Rooms.

At this meeting we will review 2021, receive reports on various aspects of church life, and elect a number of people to serve our congregations for the next 12 months and beyond.

The packs containing the agenda for the APCM, the minutes of last year's meeting and the text of the various reports that will be given at the meeting this year are available as printed booklets with copies available at services and on the church website:

<https://www.stmarysely.org/apcm-2022.html>

The revised Electoral Roll is available to view on request to the office.

Church Office Hours over Easter

This week, the office will be open Tuesday to Friday 11am - 3pm.
t. 01353 659550, e. office@stmarysely.org

Want to know more? Get in touch.....we'd love to hear from you

Team Rector - Revd Chris Hill	chris.hill@stmarysely.org
Team Vicar - Phil Marsh	phil.marsh@stmarysely.org
Team Curate - Ruth Holmes	ruth.holmes@stmarysely.org
Children & Families Missioner - Ruth New	ruth.new@stmarysely.org
Operations Co-ordinator - Kirsty Smith	kirsty.smith@stmarysely.org

Urgent Prayer Request? Email prayerchain@stmarysely.org

Sunday 17th April

Easter Sunday

ST MARY'S
ELY

Welcome to Our Easter Sunday Worship

Readings: Ephesians 2:12-22; Mark 16: 1-20



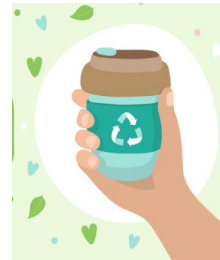
Our Online sermon is available from 9am Sunday.

10am @ The Hayward Theatre

All the St. Mary's congregations will join together to celebrate Easter Sunday, all welcome!

Leader: Ruth Holmes, Phil Marsh, Speaker: Revd. Chris Hill

Join us for Coffee!



Coffee will be served after the service. Chat to friends old and new, welcome new people, catch up!

Drinks will be served in disposable cups, or please do bring your own reusable cup if you prefer.

'Don't be alarmed', he said. 'You are looking for Jesus the Nazarene, who was crucified. He has risen!

Mark 16:6



What's on this week? 18th - 24th April 2022



After Eight - Puddings and Stones

Wednesday 20th April in the Church Rooms

After 8 is a relaxed and informal group of mainly mums. A space to build friendship, share and explore faith together. Mix of social, catching up, reflecting and chatting about scripture. For more information contact: ruth.new@stmarysely.org.

MARKET DAY

ST MARY'S

Thursday 21st April 9.30am

Join us for a short said Market Day Communion

Join us for Thursday Coffee!

Coffee will be served in the hall after Communion from 10.15am until 11.30am.



Sunday 24th April

@ Bishop Woodford House

Following Easter, we will be beginning a new sermon series looking at Revelation: Images of Hope Assured

the eight30

ST MARY'S

Our traditional communion service.

the eleven

ST MARY'S

Our contemporary communion service.

@ St. Mary's Church Hall

At the nine45, we will be looking at Faith through John's Gospel

the nine45

ST MARY'S

Our intergenerational communion service.

Ely and District CAP News

Ely and District Christians Against Poverty has just launched their own website! Find out about how CAP helps local people get out of debt, meet the Ely CAP team and find out more about how you can help:

<https://www.elycap.org/>

Prayer Chain

Do you have an urgent prayer request? Need people to pray for you? Email: prayerchain@stmarysely.org

Your email will be automatically sent to the prayer chain members who will pray for you. Your request will be kept in confidence and will only be shared with those on the prayer chain.

If you don't have email access, please telephone the office with your request and it will be passed to the prayer chain for you.

FIT COUNT

HELP US MONITOR POLLINATORS

Do you have 10 minutes to spare one day to sit in the grounds and look for pollinators.

The number of pollinator insects are on the decline due to the changing climate and data helps in research. If you have some free time between now and September, please spend 10 minutes doing an insect count in the Church grounds (or your home) and report your results <https://ukpoms.org.uk/fit-counts> or on the Fit Count App.